



If you're able to help provide a meal, a portion of a meal, serve, or clean up, please let us know! It's a wonderful way to build relationships & enjoy time together.

Please sign up [here](#) to help with food and drink. If you can help with serving or clean up, or have any questions, please call the church office to let Margie know. (843) 795-4072.

---



## **Men's Winter Clothing Community Outreach Mission**

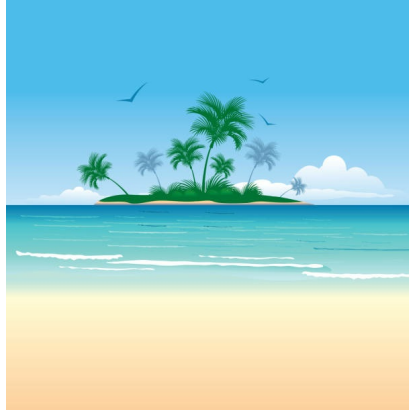
In October, HVPC will collect gently used jackets, sweatshirts, gloves, blankets, and other cold weather items for the men staying at a camp on Johns Island. These men work on local golf courses or outside in some capacity, so the need is great.

There will be a box in the narthex marked "Men's Winter Clothing Community Outreach Mission." Please bring in any men's clean, gently used jackets, sweatshirts, gloves, or blankets and place them in the box.

After the items are collected, they will be delivered to the camp the first of November. Harbor View Presbyterian Church will be participating in this event along with James Island Presbyterian Church to help those in need. In the past, our Outreach Mission has helped the local community in many ways. After all, the spirit of giving along with sharing is part of our love and faith in Jesus Christ!

If you would like more information, please contact Chad Atwater at 843-460-8623 or email Margie in the church office at [office@harborviewpc.org](mailto:office@harborviewpc.org).

---



Our HVPC Women's retreat is fast approaching. It will be on Saturday Oct 15th from 0900-1500 at beautiful Truluck Island. We have planned a day filled with fellowship, relaxation, and spiritual rejuvenation. We will be doing a bible study on celebrating the sabbath. Please join us for Bible study, arts and crafts, worship, outdoor fun, and so much more. The cost is \$20. This includes breakfast and lunch. I need a head count no later Thursday Oct 13th and you can pay Rossie or Tracy all the way up to the day of the retreat. For questions please call or text Tracy Conner 843-437-6766.



Greg Hays 9/30  
Brian Dantzler 10/2  
Nancy Parnelle 10/3  
Eric Stewart 10/3  
Maggie Wirth 10/3



### LUNCH BUNCH

Tuesday, October 4 at 12:00 p.m.  
Crab House on Wappoo Creek Drive  
Click [here](#) for the menu!



Beginning November 1st, the Church Life App will be unavailable for download. Church Life will continue to work as designed, but if you uninstall it from your phone, it will not be available to reinstall from the App Stores. You can use the browser version at [ChurchLife.mobi](http://ChurchLife.mobi). This link allows you the same access as the mobile app. You may also call the office and Margie can help you if you need to edit your personal information.



Please watch for notices via email and Facebook. We will notify you of the status of church services if there are any changes.



**Summer/Fall Hope Lodge Meals**  
Our next Hope Lodge Meal is November 2, 2022. We will be going every other month for the rest of the year. To help with a future meal, please click [here](#) to sign up.

Please let Sandra Russ know at [smruss@bellsouth.net](mailto:smruss@bellsouth.net) if you plan to attend.



Volunteer to hand out cookie jars to visitors in October! There are 2 slots open in Oct. Sign up [here](#).



**The Greeters for the month of October are:**

Oct. 2nd: Hugh Donnan,  
Chad Atwater, Denny Woods

Oct. 9th: Jeff Hays, Rossie Webber

Oct. 16th: Bob McKay, Greg Hays,  
Sandra Russ

Oct. 23rd: Gary Gist, Jeff Hays,  
Charles Truluck

Oct. 30th: Rossie Webber,  
Bob McKay

**Special Events:**

October 2nd - World Communion Sunday

October 4th - Lunch Bunch at Crab House at noon [menu](#)  
October 15th - One day Women's Retreat at Truluck Island  
October 19th - Men's Breakfast at Dills & Camp Sundries at 8 a.m. [menu](#)  
October 29th - Fall Festival  
November 6th - Yogurt bar for Coffee Fellowship  
December 11th - Outdoor Christmas Tree Lighting  
January - Bingo/Family Game Night  
January 8th - Pancake breakfast for Coffee Fellowship  
April 28-30th - Spring Women's Retreat at Camp St. Christopher

**Weekly:**

Coffee Fellowship [sign up](#)  
Cookie Jar Hand Out [sign up](#)  
Flowers for the Sanctuary [sign up](#)  
James Island Outreach food delivery  
RISE [sign up](#)

**Monthly:**

Lunch Bunch (first Tuesday)  
Men's Breakfast (third Wednesday)  
Presbyterian Women Morning Circle (third Tuesday)  
Prayer Group (third Thursday)  
Book Club (third Sunday)  
James Island Outreach Food Pantry Volunteer Team

---

~ Margie will not be in the office Fday, Sept. 30th & Monday, Oct. 3rd. ~

---

Click [here](#) to sign into Church Life and access the Church Directory.

Click [here](#) for the Prayer List.

Click [here](#) for a list of the HVPC Session members and email addresses.

---



“Sharing God’s Love with All”  
- Mark 12:31

**Mission Statement:** Harbor View Presbyterian is a neighborhood church that fosters relationships through worship and fellowship, spreads love through outreach, and seeks to create a spiritual environment for lifelong learning.

Church Office: (843) 795-4072  
Rusty's Cell Phone: (864) 399-2288

Harbor View Presbyterian | 900 Harbor View Rd, Charleston, SC 29412

[Unsubscribe\\_office@harborviewpc.org](mailto:Unsubscribe_office@harborviewpc.org)

[Update Profile](#) | [Constant Contact Data Notice](#)

Sent by [office@harborviewpc.org](mailto:office@harborviewpc.org) powered by



Try email marketing for free today!